



ELSEVIER

Expertpath

Quick, Confident Diagnosis.

Jasmine Tsai 蔡雅莉

Account Manager

0920321731

j.tsai@elsevier.com

ExpertPath 專家團隊

來自全世界各大權威機構的領導人員，包括：哥倫比亞大學醫學院、哈佛醫學院、巴拉圭亞松森大學、西奈山伊坎醫學院、西班牙聖十字聖保羅醫院、華盛頓大學醫學院、艾伯特愛因斯坦醫學院、猶他大學附設兒童醫學中心。

ExpertPath 讓您立即獲取解剖病理學各科知名專家的共同臨床知識與經驗。

- * 4,000 則以上的常見診斷與複合診斷
- * 50,000 幅可搜尋的高畫質病理學影像，並附有註解
- * 診斷群組綜觀
- * 器官系統總結資訊表格
- * 檢體處理流程指南與最適作法

ExpertPath 是解剖病理學的線上 決策支援系統

全面性

ExpertPath 提供最全面的決策支援，涵蓋解剖病理學的各项專科。ExpertPath 資料包括 4,000 則以上診斷內容、50,000 幅高畫質影像、診斷群組綜觀、器官系統表格、診斷總結表格、檢體處理流程指南、以及正常組織學內容。

專家執筆

每則主題皆延請專家編寫，並以專家嚴選的期刊與書籍參考資料作為佐證。診斷主題的資訊內容在於協助您做出救命的決策，例如檢測建議、鑑別診斷、範例圖庫、以及預後與治療資訊。

影像豐富

種類眾多的各種高畫質範例影像，包含大體病理學、H&E 染色、免疫組織化學染色法、免疫螢光染色法與臨床手術中 / 內視鏡 / 放射影像相關的電子顯微鏡影像、以及生動的彩色圖表。

由內文中瀏覽 診斷策略

階層式的內容，引導您了解疾病的分類，並且同時預覽該主題的重點資訊。

進階搜尋

利用關鍵字與分類過濾器來搜尋全部內容，例如診斷、內容介紹模組、表格、以及正常組織學主題。

專業影像搜尋

利用影像搜尋功能，快速瀏覽 ExpertPath 中數千幅高畫質影像。

個人化

將最愛類別釘選在首頁頂端可以更方便快速進入。在研究特定主題時，可直接選擇放大閱讀的影像，也可以自由決定閱讀資料的順序。

Feature Highlights

1. 主題預覽 (Topic Previews)

在目錄、搜尋結果、以及診斷模組中瀏覽主題標題時，可預覽相關內容。

2. 隨時比較 (Compare Anywhere)

可並列對照兩個診斷影像以上，方便您快速而清楚的交互參考。

3. 簡報製作

每張圖片均可自動匯出成PPT，並附上圖片說明，讓您輕鬆準備演講題材。

4. 關鍵字 link out

搜尋關鍵字可串連至 [Pubmed](#)/[radiology pdf](#)/[google](#)

5. Script 列印

按下列印鈕，該主題內容會自動生成已排版好的格式方便列印儲存

Expertpath 病理資料庫簡介

Browse by topic

ExpertPath™

What are you looking for?...



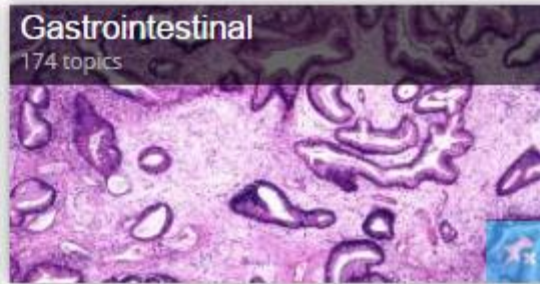
Bookmarks

Compare (0)

Help/Support

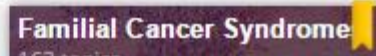
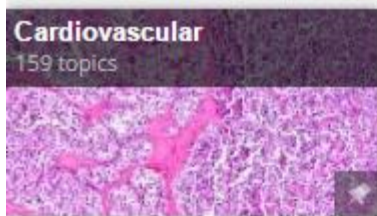
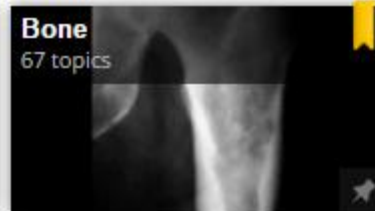
Pinned Categories

255 topics





Primary Categories


4919 topics





Search by keyword




GIST 1. 下關鍵字 X  

Filter by Category All 2. Filter Search for Images







 **Other Reactive and Neoplastic Soft Tissue Entities, In...** 14 images
Cytopathology | by Dina R. Mody, MD
... Gastrointestinal Stromal Tumor (**GIST**). ... Difficult to distinguish between beni
GIST; latter tends to have more mitosis and necrosis; ...

 **Gastrointestinal Stromal Tumor** 94 images
Soft Tissue Tumors | by Matthew R. Lindberg, MD
... Cytologic Features. Dedifferentiated **GIST**. Rare; Defined as CD117 ... imatinib
Deficient **GIST**. Characteristic multinodular ...

 **Gastrointestinal Stromal Tumor** 20 images
Molecular Oncology | by Joshua Anspach Hanson, MD
... Tumor extension into mucosa. KIT-Mutated **GIST**. ... Skeinoid fibers in benign small intestinal
tumors. PDGFRA-Mutated **GIST**. ...

 **Gastrointestinal Stromal Tumor** 40 images : 40 references Updated 7/13/15
Gastrointestinal | by Elizabeth 4. 其他參考資料超連結  

3. Bookmark list

- [Bone Island/Osteopoikilosis](#) 
Bone > Benign Bone-Forming Tumors > Bone Island..
- [Cytology Specimens for Risk Assessment of Breast Cancer](#) 
Cytopathology > Fine-Needle Aspiration, Superficial...
- [Gastrointestinal Stromal Tumor](#) 
Molecular Oncology > Molecular Pathology of Solid ...
- [Hepatocellular Carcinoma](#) 
Molecular Oncology > Molecular Pathology of Solid ...
- [Hepatocellular Carcinoma](#) 
Pediatrics > Neoplastic > Liver/Pancreas > Neoplas...
- [Hereditary Breast/Ovarian Cancer Syndrome: BRCA2](#) 
Breast > Hereditary Breast Disease > Hereditary Bre...
- [Other Reactive and Neoplastic Soft](#)

Didn't find what you were looking for? Try these resources:

[Pubmed](#)

[Key Pathology Journals](#)

[PDF Search](#)

[Google](#)

[Google Images](#)

[Google Scholar](#)

Compare

點選compare 鈕



比對不同的疾病診斷圖像

Leiomyoma

X



ExpertPath™ Compare Diagnoses (4)

Exit Compare

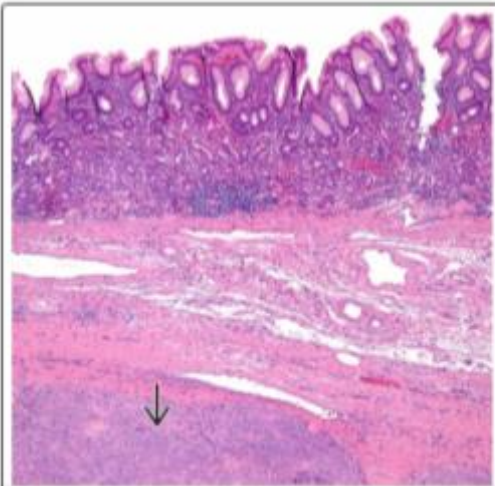
Search for "GIST"

Gastrointestinal Stromal Tumor

X

IMAGES

TEXT



Gastrointestinal Stromal Tumor

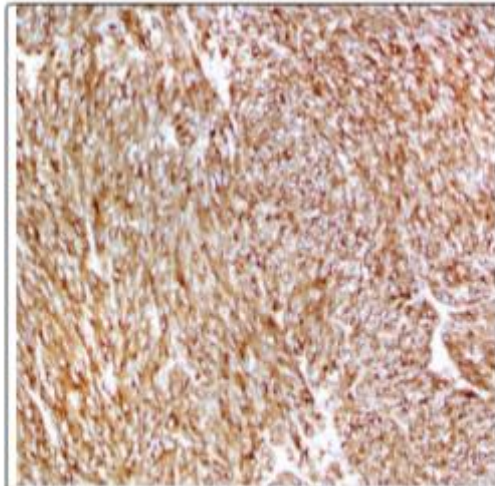
Search for "GIST"

Gastrointestinal Stromal Tumor

X

IMAGES

TEXT



CD117 immunohistochemical stain

Search for "Leiomyoma"

Leiomyoma and Variants

X

IMAGES

TEXT



Conventional leiomyoma is typically well

Superficial Leiomyoma

Soft Tissue Tumors | by Jerad M. Gardner, MD; Jonathan B. McHugh,

16 images : 17 references

Updated 6/17/15



Key Facts

摘錄自AMIRSYS電子書系列的完整內容

1. 點選

2. 點選

Table

Other Reactive and Neoplastic Soft Tissue Entities, In... 14 images : 13 references
Cytopathology | by Dina R. Mody, MD Updated 12/20/13

... Gastrointestinal Stromal Tumor (**GIST**). ... Difficult to distinguish between benign and malignant **GIST**; latter tends to have more mitosis and necrosis; ...

Other Reactive and Neoplastic Soft Tissue Entities, Including GIST
Dina R. Mody, MD

Claim CME

VIEW FULL DOCUMENT

NODULAR FASCIITIS NEXT

General Features

- Benign but rapidly growing myofibroblastic mass that produces cellular proliferation and is mitotically active in its early stages
- Head and neck areas, upper trunk, and upper extremities; superficial location
- Histologically, loose storiform feathery pattern with tissue culture-like appearance and loose myxoid stroma ± cystic spaces and dense keloid-like collagen
- Osteoclast-like giant cells, histiocytes, lymphocytes, and extravasated erythrocytes can be seen
- 3 forms correlating with duration of lesion: Myxoid (earliest [within days]), cellular, and fibrous
- Variants include nodular myositis, intravascular fasciitis, cranial fasciitis, and proliferative funiculitis
- Patients are usually in their 3rd, 4th decade

NODULAR FASCIITIS
PROLIFERATIVE MYOSITIS/FASCIITIS
MYOSITIS OSSIFICANS
ABDOMINAL FAT PAD ASPIRATION FOR AMYLOID
SOLITARY FIBROUS TUMOR
EXTRASKELETAL MESENCHYMAL CHONDROSARCOMA
GASTROINTESTINAL STROMAL TUMOR (GIST)
SELECTED REFERENCES

ofibroblastic proliferation early stages trunk, and location feathery appearance mitotic spaces

erythrocytes can be seen

- 3 forms correlating with duration of lesion: Myxoid (earliest [within days]), cellular, and

Script

Cytopathology > Fine-Needle Aspiration, Deep Organs and Tissues > Soft Tissue > Other Tumors


Other Reactive and Neoplastic Soft Tissue Entities, Including GIST

Dina R. Mody, MD

mark

Print

Hide Images

選print 

ExpertPath™

Other Rea

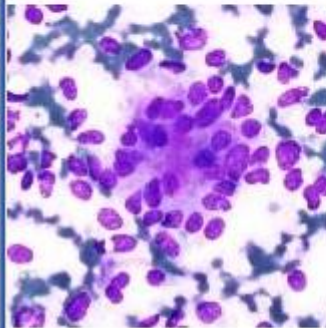
R. Mody, MD

Selected Images

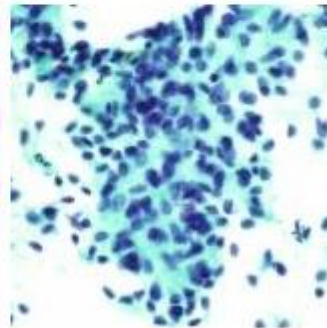
NODULAR

General F

- Benign product early sta
- Head an superfic
- Histolog culture-spaces
- Osteocl extrav
- 3 forms [within
- Variants cranial
- Patients

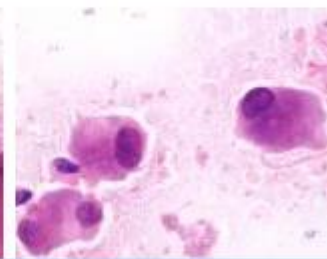
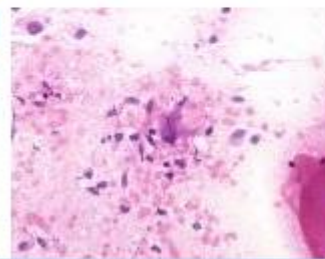
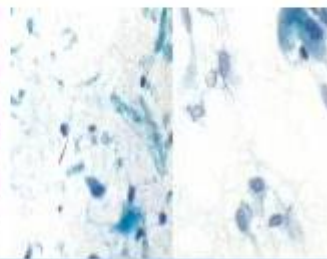
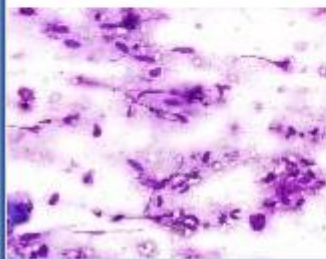


Diff-Quik stain of a mesenchymal chondrosarcoma shows a monotonous population of small blue cells with fibrillar magenta stroma → and lack of lymphoglandular bodies in the background.

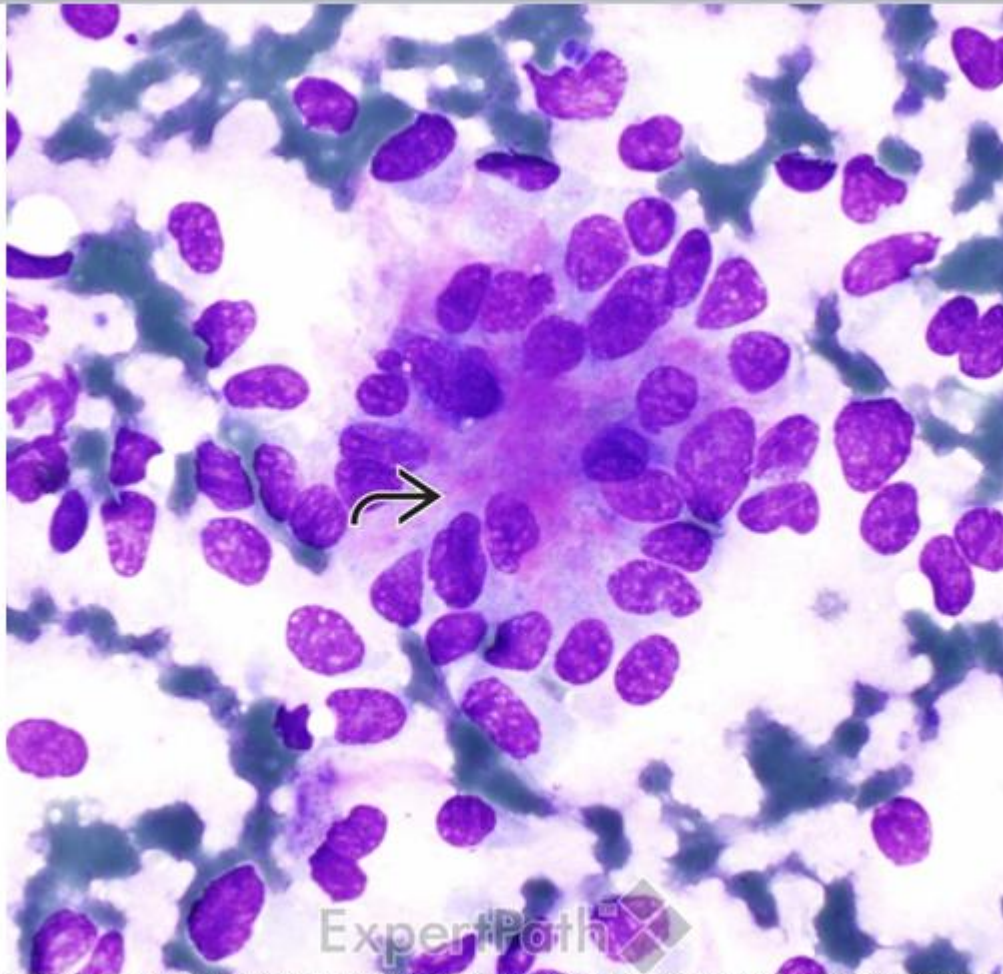


Pap stain (same case) shows round and spindle cells with minimal pleomorphism, green stroma → in the center, and lack of mitosis or necrosis.

Benign/Reactive Subcutaneous and Soft Tissue Masses



圖像自動轉存為PPT



Diff-Quik stain of a mesenchymal chondrosarcoma shows a monotonous population of small blue cells with fibrillar magenta stroma (black curved arrow) and lack of lymphoglandular bodies in the background.

[Download to Presentation](#)

← 點選print